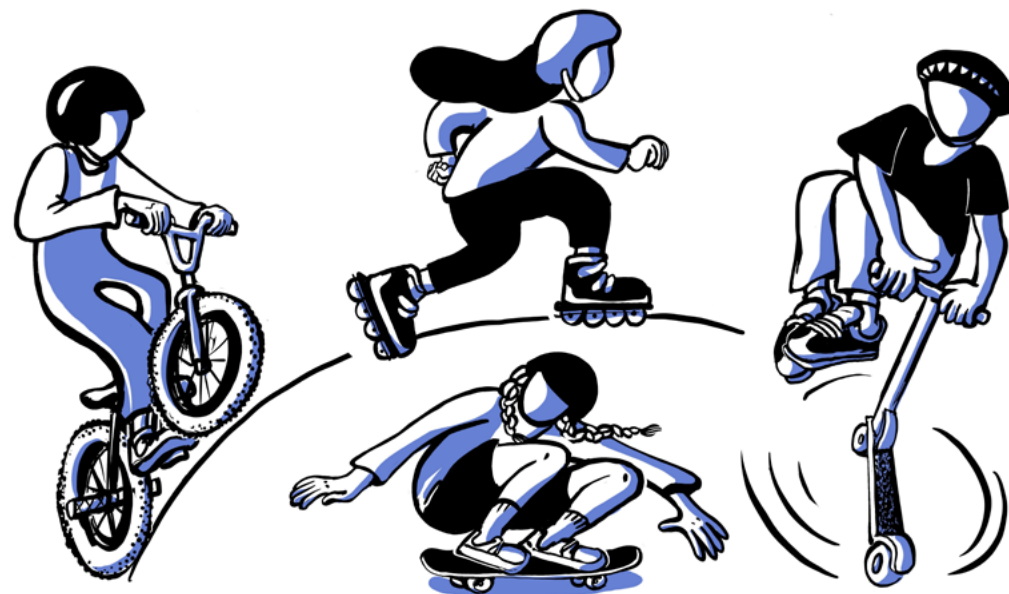






MERYL LYNN



MERYL LYNN

Information

Service de la jeunesse
Rue de la Servette – 1202 Geneva
022 418 45 00
skatepark_de_plainpalais  

Partner associations

Skateboard

GVASK8  
info@gvask8.com

BMX

Freestyle Geneva BMX (FGBMX)  

Roller skates

Patin.eureuses 

Regulations

Skatepark of Plainpalais





REGULATIONS OF THE PLAINPALAIS SKATEPARK

Status as of April 1, 2021

The City of Geneva provides the Plainpalais Skatepark free of charge to the public.



The Youth Department of the City of Geneva is responsible for the management of the site. To ensure the safety of the public, it is authorized to resort to the services of the municipal police, in the event of non-compliance with the rules listed below, pursuant to art. 12 para. 4 of the Municipal Police Regulations of July 26, 2017 (LC 21 411).

The organization of events or competitions must be approved in advance by the City of Geneva's Youth Department.

Skatepark users are required to respect these regulations, otherwise they may be excluded from the Skatepark site.



Access to the Skatepark

- The Skatepark is dedicated to the practice of a sport and its usage requires sufficient control and autonomy on the part of the users.
- Only adapted equipment can be used on the site (skateboard, rollerblades, bmx and scooter).
- Animals, strollers and motorized vehicles are not allowed on the site.
- Pedestrians are not allowed to walk in the Skatepark.



Rules of safety and respect of the site

- Skatepark users must show respect for other users.
- The wearing of helmets and protections (knees/elbows) is strongly recommended.
- In case of rain, the Skatepark should not be used.
- The consumption of alcohol is prohibited in the Skatepark.
- Glass bottles are not allowed in the Skatepark.
- Recycling garbage cans and containers are available to the public.
- Spitting, littering and other deliberate defacement are prohibited.

The City of Geneva declines all responsibility in the event of an accident.

In the event of an accident occurring outside the presence of City of Geneva personnel, users shall notify the emergency services and secure the area while waiting for them.

Conditions of use

- Access is forbidden to children under 10 years of age, except during the hours of 10:00 am to 12:00 pm, during which children from 8 years of age can access the site under the supervision of a responsible adult.
- From 12pm, the Skatepark is reserved for people over 10 years old.
- In any case, minors must be accompanied or have the authorization of their legal representatives who must be reachable at all times.
- Persons conducting classes must register with the Youth Department staff and comply with their recommendations.



EMERGENCY NUMBERS

Ambulance
144

Police
117

Municipal Police
022 418 22 22

The City of Geneva reserves the right to denounce dangerous behavior and any violation of the rules governing the use of the public domain and the present regulations.